

RANGE OF APPLICATION

HYDRO

version 1.1 / 26-04-2012

Factory – Head Office

Polykastro Industrial Park
61200 Polykastro, Greece
Tel.: +30 23430 20140, 20150
Fax: +30 23430 23701

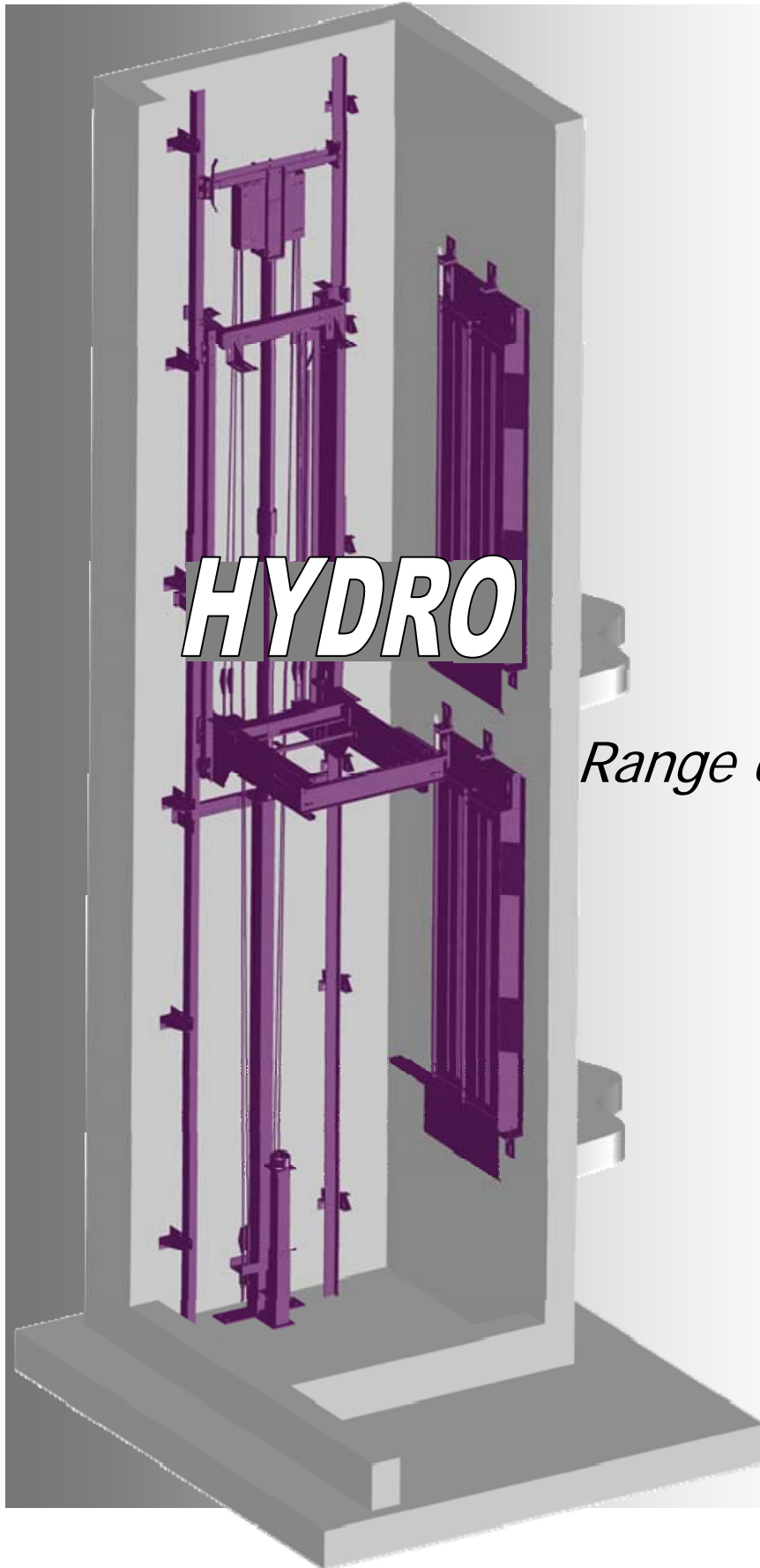
Athens Office-Showroom

12, Lassani str., 12132
Peristeri, Athens, Greece
Tel.: +30 210 3416210, 210 5789881
Fax: +30 210 3416474

Athens Warehouse

Odyssea Eliti 98, Ano Liosia,
13342 Attiki, Athens, Greece
Tel.: +30 210 5595163,
Fax: +30 210 5596651

web: www.doppler.gr
Email: info@doppler.gr



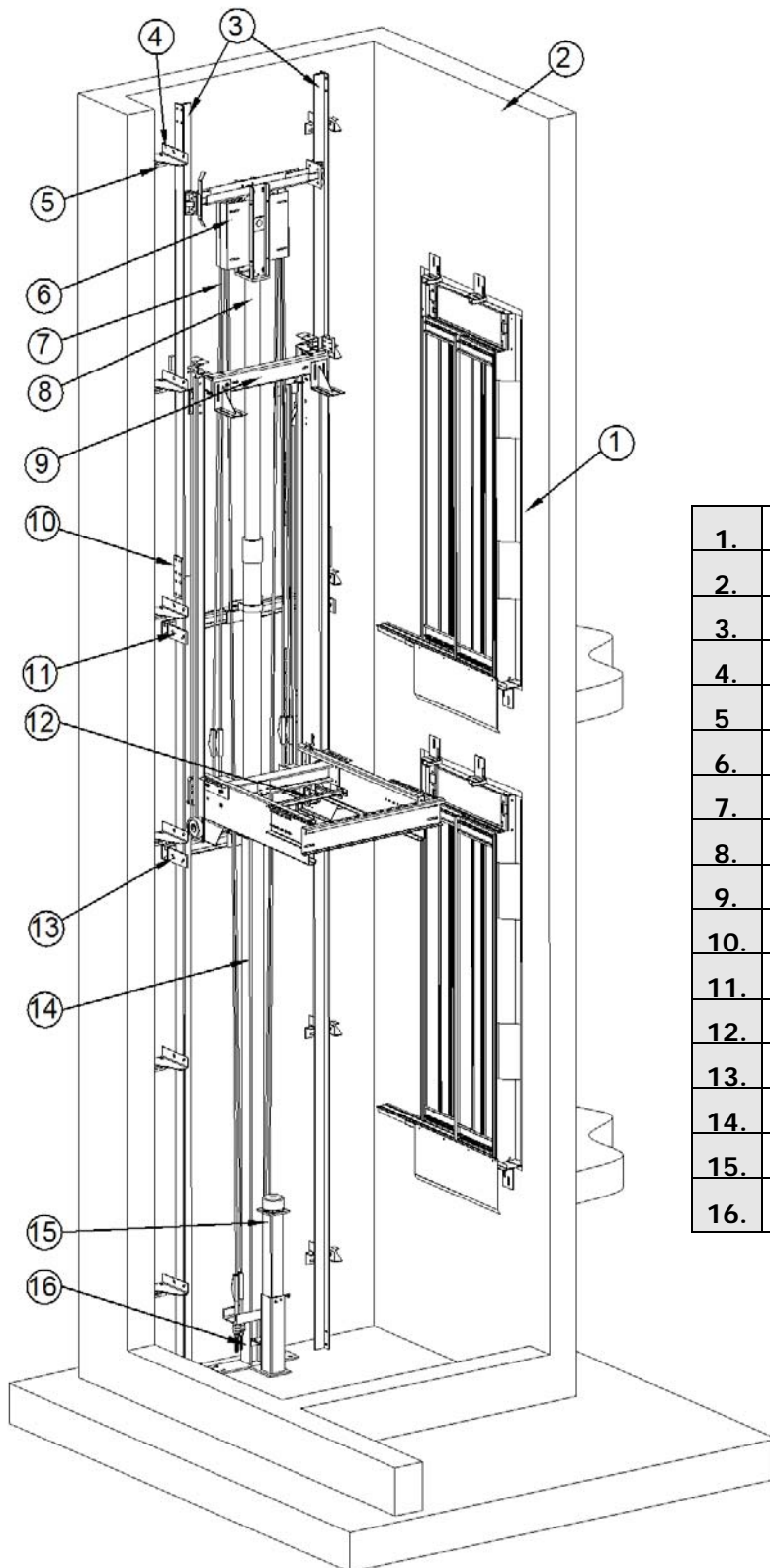
HYDRO

Range of Application

Contents

3D LAYOUT	3
LAYOUT ARRANGEMENT: ACTING 2:1	4
SINGLE ENTRANCE – GUIDE RAILS AT THE SIDE	4
<i>Technical specification</i>	4
<i>Plan view</i>	5
SINGLE ENTRANCE – GUIDE RAILS AT REAR	6
<i>Technical specification</i>	6
<i>Plan view</i>	7
ADJACENT ENTRANCES – GUIDE RAILS AT THE SIDE	8
<i>Technical specification</i>	8
<i>Plan view</i>	9
THROUGH CAR – GUIDE RAILS AT THE SIDE	10
<i>Technical specification</i>	10
<i>Plan view</i>	11
GENERAL SECTION VIEW	12
<i>Section view</i>	12
LAYOUT ARRANGEMENT: ACTING 1:1	13
SINGLE ENTRANCE – GUIDE RAILS AT THE SIDE	13
<i>Technical specification</i>	13
<i>Plan view</i>	14
SINGLE ENTRANCE – GUIDE RAILS AT REAR.....	15
<i>Technical specification</i>	15
<i>Plan view</i>	16
ADJACENT ENTRANCES – GUIDE RAILS AT THE SIDE	17
<i>Technical specification</i>	17
<i>Plan view</i>	18
THROUGH CAR – GUIDE RAILS AT THE SIDE	19
<i>Technical specification</i>	19
<i>Plan view</i>	20
GENERAL SECTION VIEW	21
<i>Section view</i>	21
CONTROLLER, CONTROL VALVES BLOCK AND OIL TANK	22
CERTIFICATION	23
MANUFACTURER’S DECLARATION.....	23

3D layout



1.	LANDING DOORS
2.	SHAFT WALL
3.	GUIDE RAILS
4.	GUIDE RAIL BRACKETS
5.	WALL BRACKETS
6.	PULLEY
7.	ROPES
8.	JACK
9.	CAR SLING
10.	GUIDE RAIL FISHPLATES
11.	RAM SUPPORT BRACKET
12.	CAR SLING SAFETY GEAR
13.	RAM TUBE SUPPORT
14.	RAM TUBE
15.	BUFFER BASE
16.	SUSPENSION BASE

Layout arrangement: acting 2:1

Single entrance – guide rails at the side

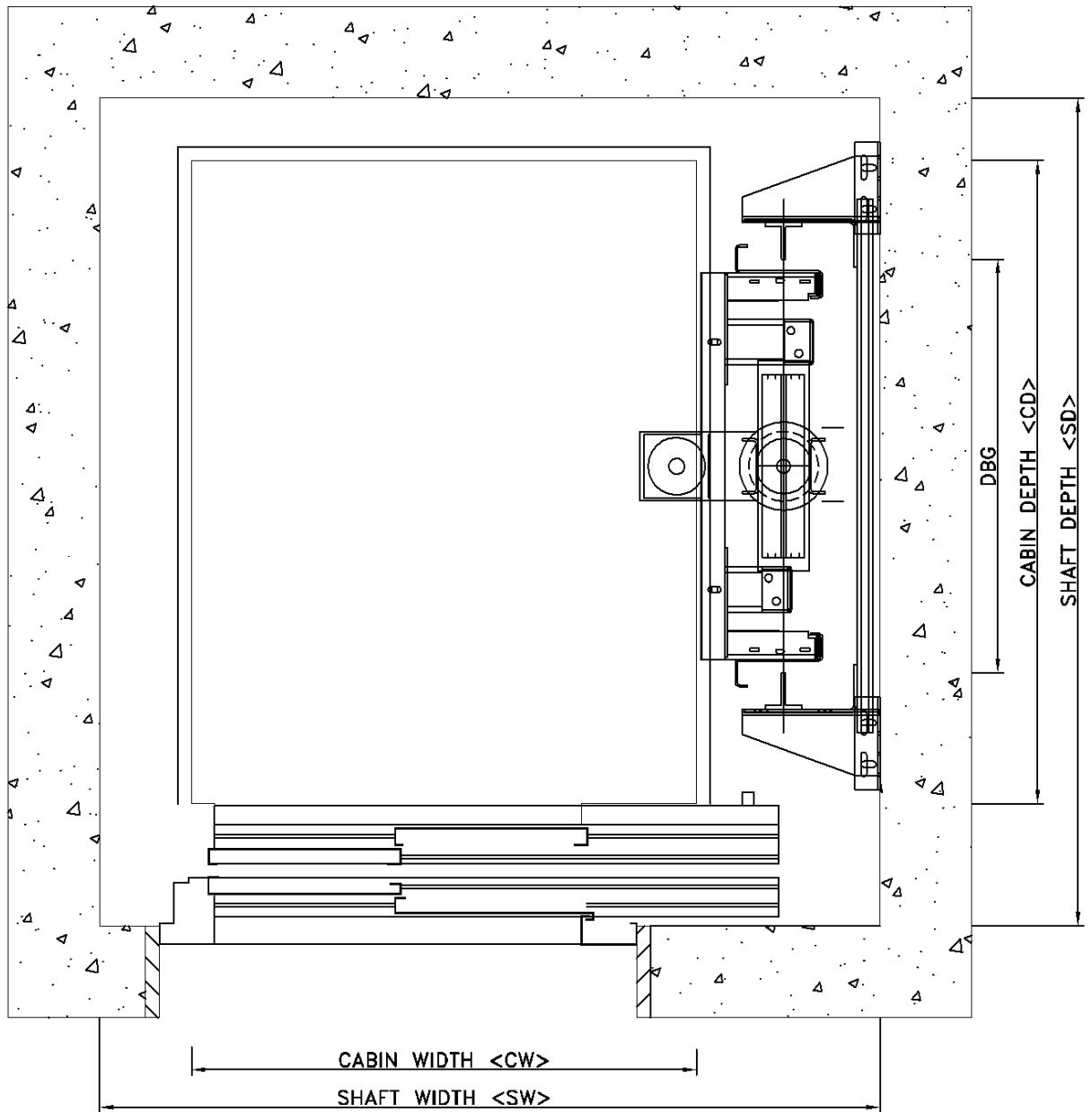
Technical specification

No of Passengers	Capacity [kg*]	Car Sling Type	Door Type	Cabin Width [mm]	Cabin Depth [mm]	Shaft Width [mm]	Shaft Depth [mm]	Guide Rails	Pulley Diameter & No of Ropes
3	225	HFS 1237	600 2PT	700	1000	1200	1400	T70x65x09	Φ320x4
4	300	HFS 1237	700 2PT	850	1050	1350	1450	T70x65x09	Φ320x4
5	375	HFS 1237	700 2PT	1000	1100	1500	1500	T82x68x09	Φ320x4
5	400	HFS 2237	700 2PT	1000	1150	1500	1550	T82x68x09	Φ360x4
6	450	HFS 2237	700 2PT	1100	1150	1600	1550	T89x62x16	Φ360x4
7	525	HFS 2237	800 2PT	1100	1300	1600	1700	T89x62x16	Φ360x4
8	600	HFS 2237	800 2PT	1100	1400	1600	1800	T89x62x16	Φ400x4
8	630	HFS 2237	800 2PT	1100	1400	1600	1800	T89x62x16	Φ400x4
9	675	HFS 2237	900 2PT	1100	1550	1600	1950	T89x62x16	Φ400x4
10	750	HFS 3137	900 2PT	1200	1550	1700	1950	T114x89x16	Φ400x6
11	800	HFS 3137	900 2PT	1200	1600	1700	2000	T114x89x16	Φ400x6
11	825	HFS 3137	900 2PT	1200	1650	1700	2050	T114x89x16	Φ400x6
12	900	HFS 3137	1000 2PT	1300	1650	1800	2050	T114x89x16	Φ400x6
13	975	HFS 3137	1000 2PT	1300	1750	1800	2150	T114x89x16	Φ400x6
13	1000	HFS 3137	1000 2PT	1300	1800	1800	2200	T114x89x16	Φ400x6
14	1050	HFS 3137	1000 2PT	1300	1900	1800	2300	T114x89x16	Φ400x6
15	1125	HFU 200	1000 2PT	1300	2000	1800	2400	T114x89x16	Φ400x6
16	1200	HFU 200	1100 2PT	1350	2000	1850	2400	T114x89x16	Φ450x6
16	1250	HFU 200	1100 2PT	1350	2100	1850	2500	T114x89x16	Φ450x6
17	1275	HFU 200	1100 2PT	1350	2150	1850	2550	T114x89x16	Φ450x6
18	1350	HFU 220	1100 2PT	1350	2250	1850	2650	T127x89x16-3	Φ450x6
19	1425	HFU 220	1100 2PT	1350	2350	1850	2750	T127x89x16-3	Φ450x6
20	1500	HFU 220	1100 2PT	1400	2400	1900	2800	T127x89x16-3	Φ450x6
21	1600	HFU 220	1100 2PT	1400	2450	1900	2850	T127x89x16-3	Φ480x6
24	1800	HFU 240	1100 2PT	1500	2500	2050	2900	T127x89x16-3	Φ480x6

*For car down speed > 0.63m/sec progressive safety gear is required for the car sling

Layout arrangement: acting 2:1
Single entrance – guide rails at the side

Plan view



Layout arrangement: acting 2:1

Single entrance – guide rails at rear

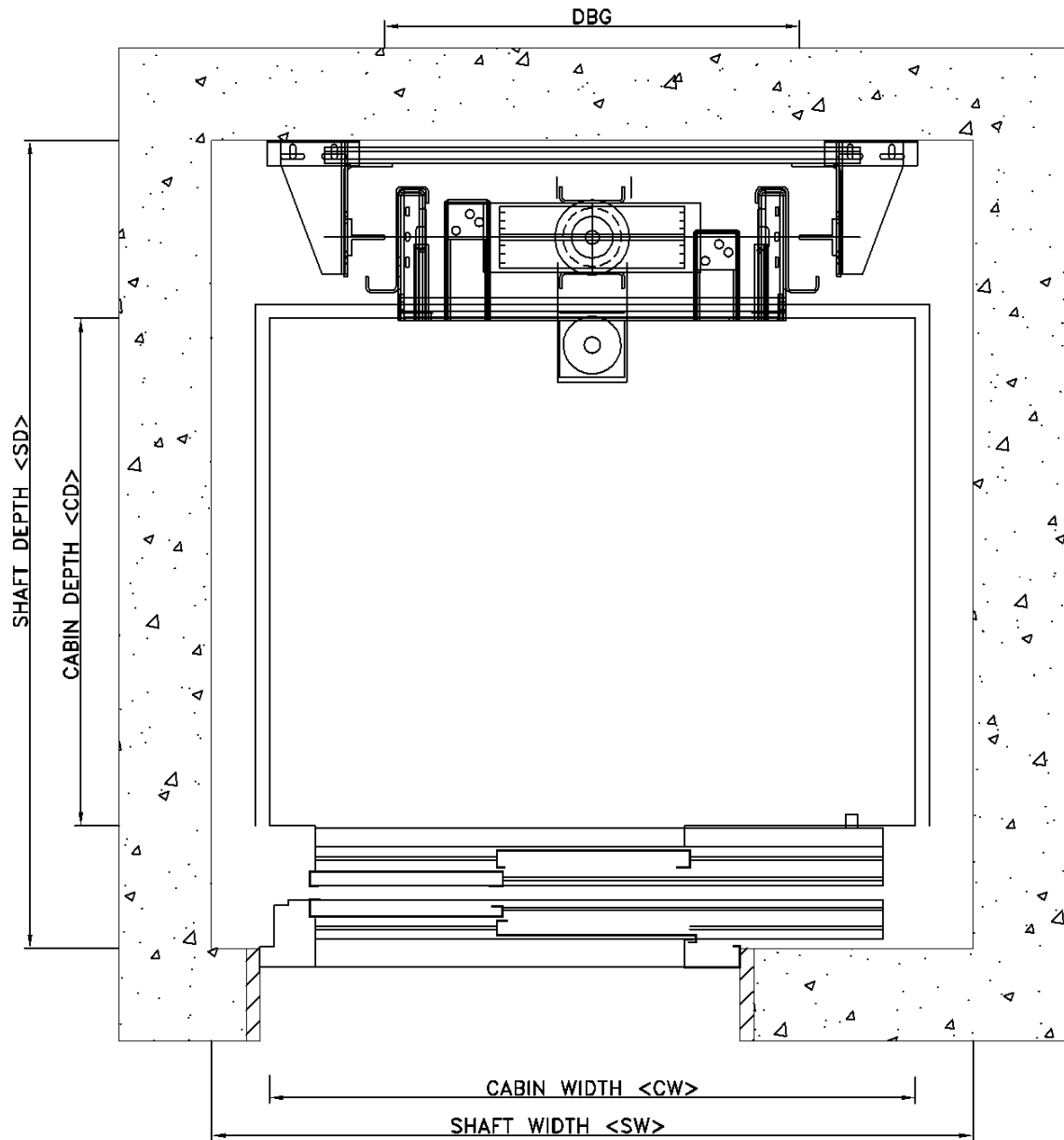
Technical specification

No of Passengers	Capacity [kg*]	Car Sling Type	Door Type	Cabin Width [mm]	Cabin Depth [mm]	Shaft Width [mm]	Shaft Depth [mm]	Guide Rails	Pulley Diameter & No of Ropes
3	225	HFS 1237	600 2PT	1000	700	1200	1400	T70x65x09	Φ320x4
4	300	HFS 1237	700 2PT	1050	850	1300	1550	T70x65x09	Φ320x4
5	375	HFS 1237	700 2PT	1100	1000	1300	1700	T82x68x09	Φ320x4
5	400	HFS 2237	700 2PT	1150	1000	1350	1700	T82x68x09	Φ360x4
6	450	HFS 2237	700 2PT	1150	1100	1350	1800	T89x62x16	Φ360x4
7	525	HFS 2237	800 2PT	1300	1100	1500	1800	T89x62x16	Φ360x4
8	600	HFS 2237	800 2PT	1400	1100	1600	1800	T89x62x16	Φ400x4
8	630	HFS 2237	800 2PT	1400	1100	1600	1800	T89x62x16	Φ400x4
9	675	HFS 2237	900 2PT	1550	1100	1750	1800	T89x62x16	Φ400x4
10	750	HFS 3137	900 2PT	1550	1200	1750	1900	T114x89x16	Φ400x6
11	800	HFS 3137	900 2PT	1600	1200	1800	1900	T114x89x16	Φ400x6
11	825	HFS 3137	900 2PT	1650	1200	1850	1900	T114x89x16	Φ400x6
12	900	HFS 3137	1000 2PT	1650	1300	1850	2000	T114x89x16	Φ400x6
13	975	HFS 3137	1000 2PT	1750	1300	1950	2000	T114x89x16	Φ400x6
13	1000	HFS 3137	1000 2PT	1800	1300	2000	2000	T114x89x16	Φ400x6
14	1050	HFS 3137	1000 2PT	1900	1300	2100	2000	T114x89x16	Φ400x6
15	1125	HFU 200	1000 2PT	2000	1300	2200	2000	T114x89x16	Φ400x6
16	1200	HFU 200	1100 2PT	2000	1350	2200	2050	T114x89x16	Φ450x6
16	1250	HFU 200	1100 2PT	2100	1350	2300	2050	T114x89x16	Φ450x6
17	1275	HFU 200	1100 2PT	2150	1350	2350	2050	T127x89x16-3	Φ450x6
18	1350	HFU 220	1100 2PT	2250	1350	2450	2050	T127x89x16-3	Φ450x6
19	1425	HFU 220	1100 2PT	2350	1350	2550	2050	T127x89x16-3	Φ450x6
20	1500	HFU 220	1100 2PT	2400	1400	2600	2100	T127x89x16-3	Φ450x6
21	1600	HFU 220	1100 2PT	2450	1400	2650	2100	T127x89x16-3	Φ480x6
24	1800	HFU 240	1100 2PT	2500	1500	2700	2250	T127x89x16-3	Φ480x6

*For car down speed > 0.63m/sec progressive safety gear is required for the car sling

Layout arrangement: acting 2:1
Single entrance – guide rails at rear

Plan view



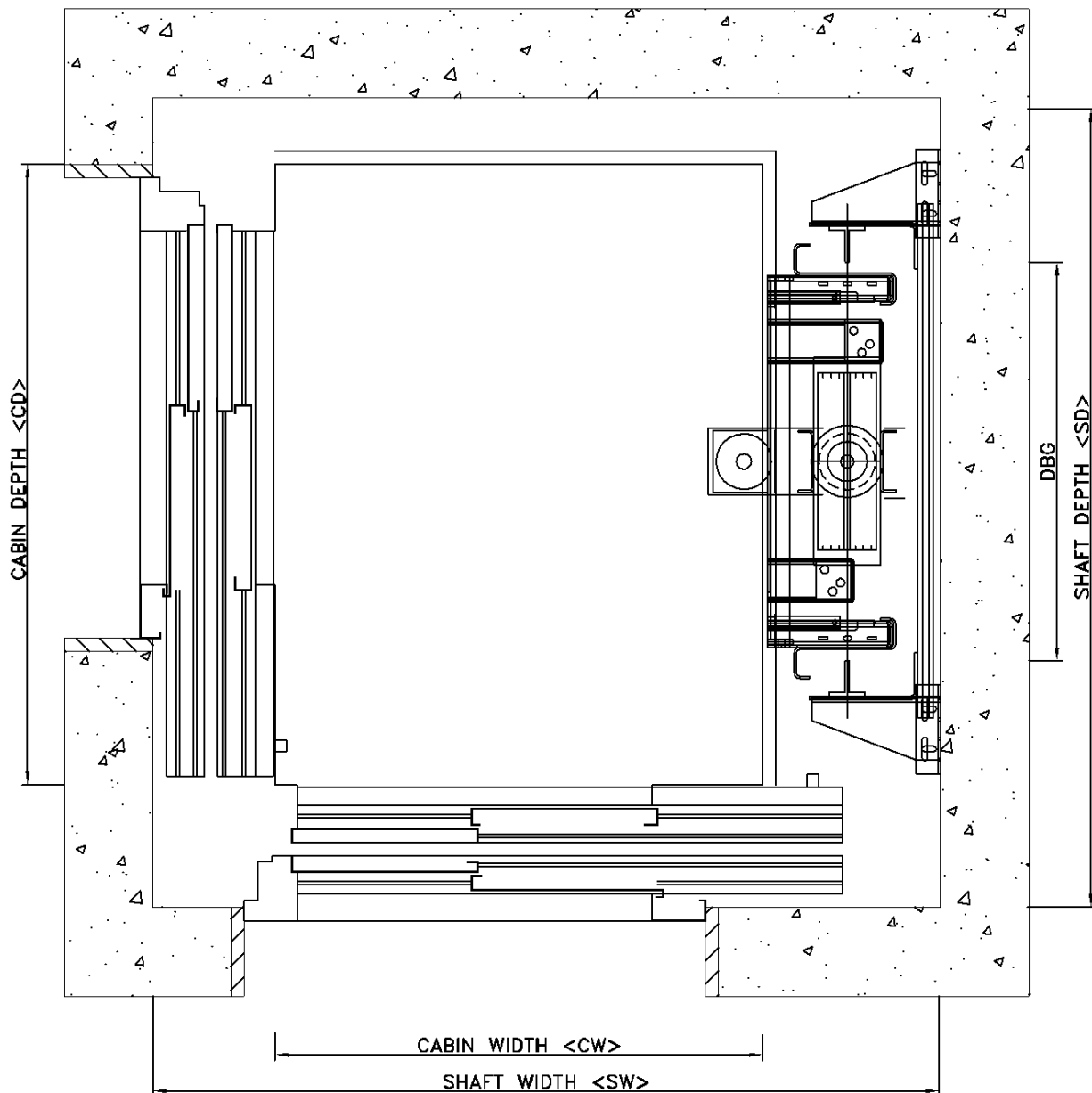
Layout arrangement: acting 2:1
 Adjacent entrances – guide rails at the side

Technical specification

No of Passengers	Capacity [kg*]	Car Slng Type	Door Type	Cabin Width [mm]	Cabin Depth [mm]	Shaft Width [mm]	Shaft Depth [mm]	Guide Rails	Pulley Diameter & No of Ropes
3	225	HFS 1237	600 2PT	700	1000	1400	1400	T70x65x09	Φ320x4
4	300	HFS 1237	700 2PT	850	1050	1550	1450	T82x68x09	Φ320x4
5	375	HFS 2237	700 2PT	1000	1100	1700	1500	T89x62x16	Φ320x4
5	400	HFS 2237	700 2PT	1000	1150	1700	1550	T89x62x16	Φ360x4
6	450	HFS 2237	700 2PT	1100	1150	1800	1550	T89x62x16	Φ360x4
7	525	HFS 2237	800 2PT	1100	1300	1800	1700	T89x62x16	Φ360x4
8	600	HFS 2237	800 2PT	1100	1400	1800	1800	T89x62x16	Φ400x4
8	630	HFS 2237	800 2PT	1100	1400	1800	1800	T89x62x16	Φ400x4
9	675	HFS 2237	900 2PT	1100	1550	1800	1950	T114x89x16	Φ400x4
10	750	HFS 3137	900 2PT	1200	1550	1900	1950	T114x89x16	Φ400x6
11	800	HFS 3137	900 2PT	1200	1600	1900	2000	T114x89x16	Φ400x6
11	825	HFS 3137	900 2PT	1200	1650	1900	2050	T114x89x16	Φ400x6
12	900	HFS 3137	1000 2PT	1300	1650	2000	2050	T114x89x16	Φ400x6
13	975	HFS 3137	1000 2PT	1300	1750	2000	2150	T114x89x16	Φ400x6
13	1000	HFS 3137	1000 2PT	1300	1800	2000	2200	T114x89x16	Φ400x6
14	1050	HFS 3137	1000 2PT	1300	1900	2000	2300	T114x89x16	Φ400x6
15	1125	HFU 200	1000 2PT	1300	2000	2000	2400	T114x89x16	Φ400x6
16	1200	HFU 200	1100 2PT	1350	2000	2050	2400	T114x89x16	Φ450x6
16	1250	HFU 200	1100 2PT	1350	2100	2050	2500	T127x89x16-3	Φ450x6
17	1275	HFU 200	1100 2PT	1350	2150	2050	2550	T127x89x16-3	Φ450x6
18	1350	HFU 220	1100 2PT	1350	2250	2050	2650	T127x89x16-3	Φ450x6
19	1425	HFU 220	1100 2PT	1350	2350	2050	2750	T127x89x16-3	Φ450x6
20	1500	HFU 220	1100 2PT	1400	2400	2100	2800	T127x89x16-3	Φ450x6
21	1600	HFU 220	1100 2PT	1400	2450	2100	2850	T127x89x16-3	Φ480x6
24	1800	HFU 240	1100 2PT	1500	2500	2250	2900	T127x89x16-3	Φ480x6

*For car down speed > 0.63m/sec progressive safety gear is required for the car sling

Layout arrangement: acting 2:1
Adjacent entrances – guide rails at the side
Plan view



Layout arrangement: acting 2:1

Through car – guide rails at the side

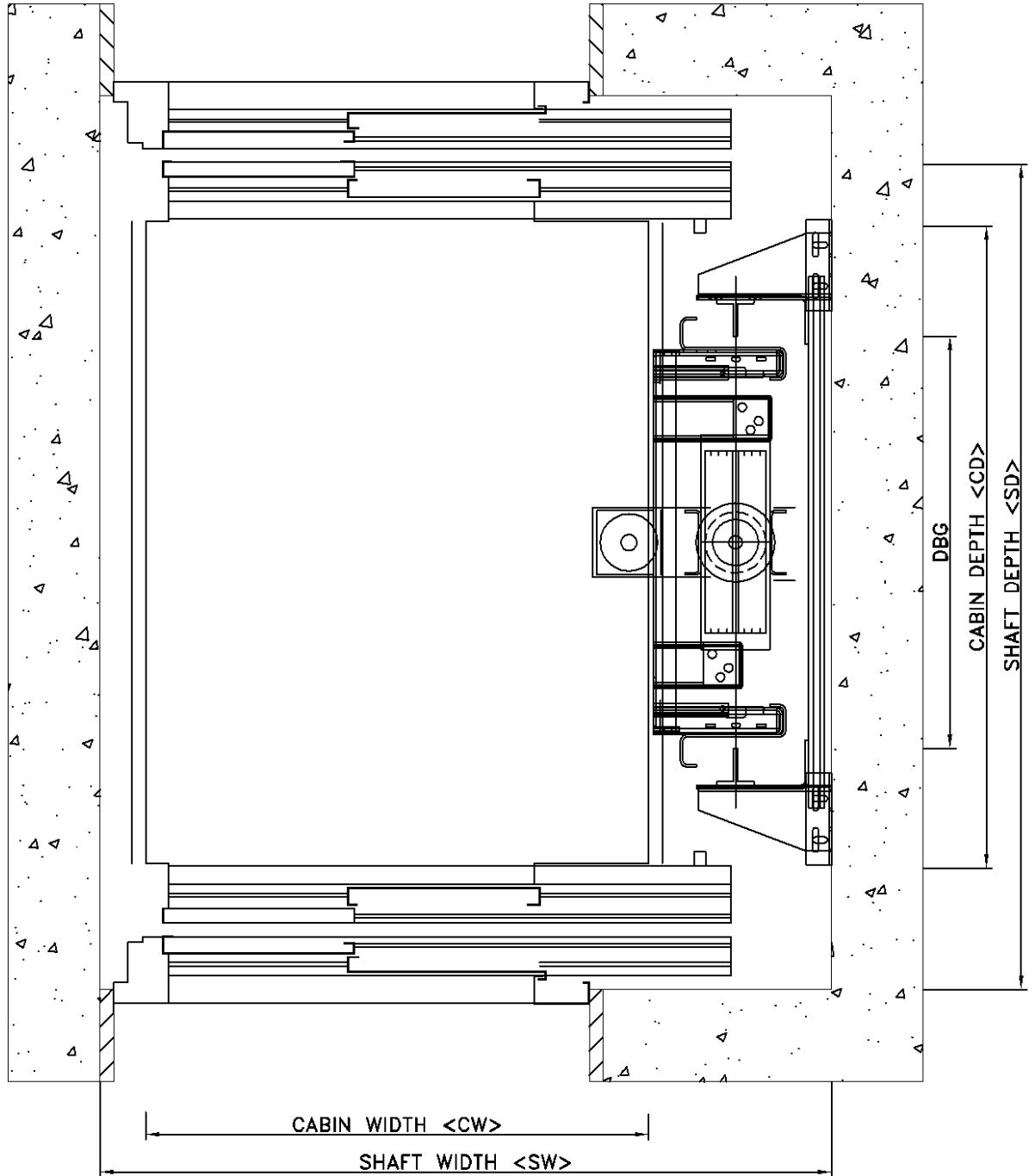
Technical specification

No of Passengers	Capacity [kg*]	Car Slings Type	Door Type	Cabin Width [mm]	Cabin Depth [mm]	Shaft Width [mm]	Shaft Depth [mm]	Guide Rails	Pulley Diameter & No of Ropes
3	225	HFS 1237	600 2PT	700	1000	1200	1600	T70x65x09	Φ320x4
4	300	HFS 1237	700 2PT	850	1050	1350	1650	T70x65x09	Φ320x4
5	375	HFS 1237	700 2PT	1000	1100	1500	1700	T82x68x09	Φ320x4
5	400	HFS 2237	700 2PT	1000	1150	1500	1750	T82x68x09	Φ360x4
6	450	HFS 2237	700 2PT	1100	1150	1600	1750	T89x62x16	Φ360x4
7	525	HFS 2237	800 2PT	1100	1300	1600	1900	T89x62x16	Φ360x4
8	600	HFS 2237	800 2PT	1100	1400	1600	2000	T89x62x16	Φ400x4
8	630	HFS 2237	800 2PT	1100	1400	1600	2000	T89x62x16	Φ400x4
9	675	HFS 2237	900 2PT	1100	1550	1600	2150	T89x62x16	Φ400x4
10	750	HFS 3137	900 2PT	1200	1550	1700	2150	T114x89x16	Φ400x6
11	800	HFS 3137	900 2PT	1200	1600	1700	2200	T114x89x16	Φ400x6
11	825	HFS 3137	900 2PT	1200	1650	1700	2250	T114x89x16	Φ400x6
12	900	HFS 3137	1000 2PT	1300	1650	1800	2250	T114x89x16	Φ400x6
13	975	HFS 3137	1000 2PT	1300	1750	1800	2350	T114x89x16	Φ400x6
13	1000	HFS 3137	1000 2PT	1300	1800	1800	2400	T114x89x16	Φ400x6
14	1050	HFS 3137	1000 2PT	1300	1900	1800	2500	T114x89x16	Φ400x6
15	1125	HFU 200	1000 2PT	1300	2000	1800	2600	T114x89x16	Φ400x6
16	1200	HFU 200	1100 2PT	1350	2000	1850	2600	T114x89x16	Φ450x6
16	1250	HFU 200	1100 2PT	1350	2100	1850	2700	T114x89x16	Φ450x6
17	1275	HFU 200	1100 2PT	1350	2150	1850	2750	T127x89x16-3	Φ450x6
18	1350	HFU 220	1100 2PT	1350	2250	1850	2850	T127x89x16-3	Φ450x6
19	1425	HFU 220	1100 2PT	1350	2350	1850	2950	T127x89x16-3	Φ450x6
20	1500	HFU 220	1100 2PT	1400	2400	1900	3000	T127x89x16-3	Φ450x6
21	1600	HFU 220	1100 2PT	1400	2450	1900	3050	T127x89x16-3	Φ480x6
24	1800	HFU 240	1100 2PT	1500	2500	2050	3100	T127x89x16-3	Φ480x6

*For car down speed > 0.63m/sec progressive safety gear is required for the car sling

Layout arrangement: acting 2:1
Through car – guide rails at the side

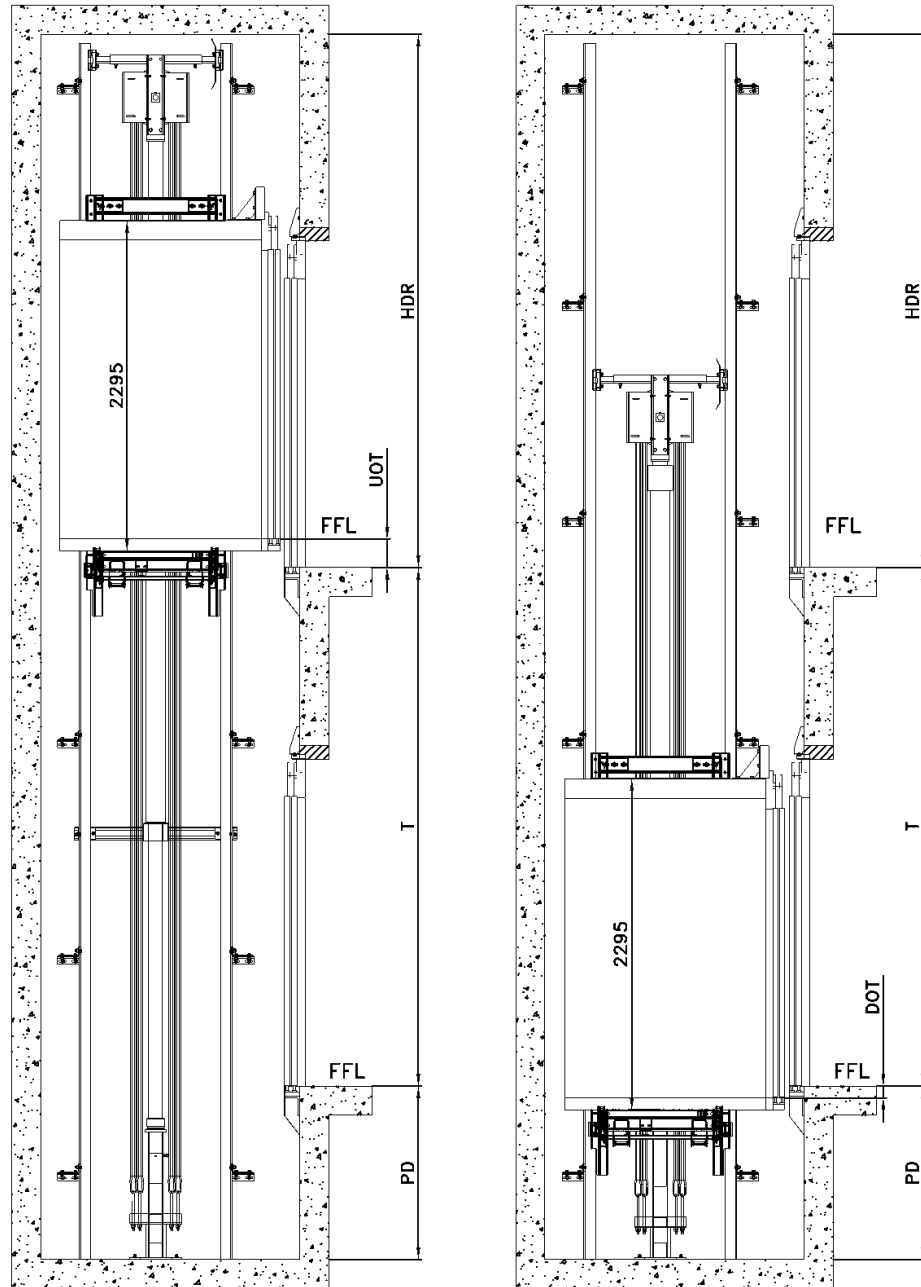
Plan view



Layout arrangement: acting 2:1

General section view

Section view



HDR	HEADROOM	3350 mm (min)
UOT	UP OVERTRAVEL	120 mm(min)
T	TRAVEL	23000 mm (max)
PD	PIT DEPTH	1200 mm(min)
DOT	DOWN OVERTRAVEL	80 mm (min)

Layout arrangement: acting 1:1

Single entrance – guide rails at the side

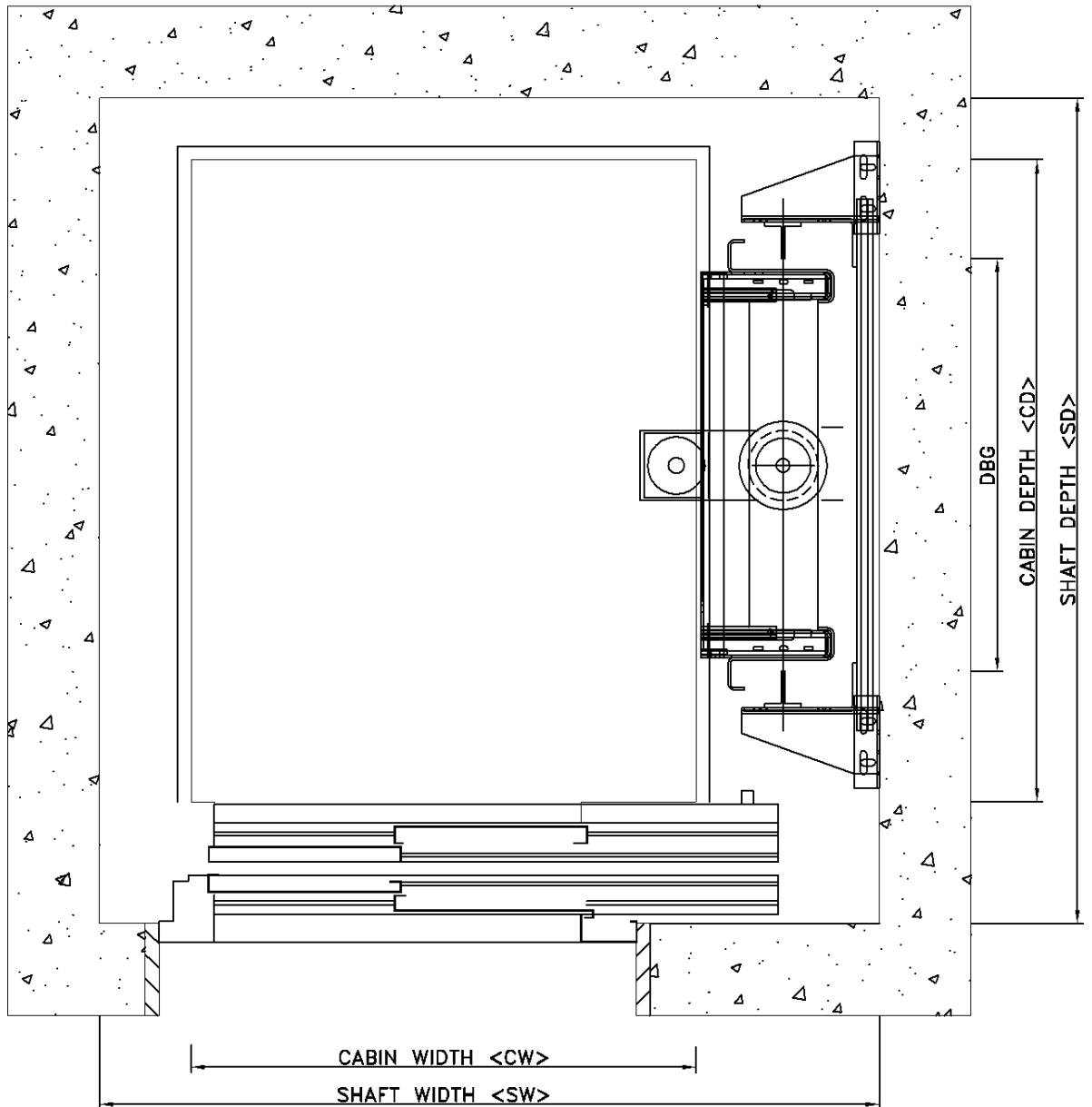
Technical specification

No of Passengers	Capacity [kg*]	Car Sling Type	Door Type	Cabin Width [mm]	Cabin Depth [mm]	Shaft Width [mm]	Shaft Depth [mm]	Guide Rails
3	225	HFS 2237-S	600 2PT	700	1000	1200	1400	T70x65x09
4	300	HFS 2237-S	700 2PT	850	1050	1350	1450	T70x65x09
5	375	HFS 2237-S	700 2PT	1000	1100	1500	1500	T70x65x09
5	400	HFS 2237-S	700 2PT	1000	1150	1500	1550	T70x65x09
6	450	HFS 2237-S	700 2PT	1100	1150	1600	1550	T70x65x09
7	525	HFS 2237-S	800 2PT	1100	1300	1600	1700	T82x68x09
8	600	HFS 2237-S	800 2PT	1100	1400	1600	1800	T82x68x09
8	630	HFS 2237-S	800 2PT	1100	1400	1600	1800	T82x68x09
9	675	HFS 2237-S	900 2PT	1100	1550	1600	1950	T82x68x09
10	750	HFS 3137-S	900 2PT	1200	1550	1700	1950	T89x62x16
11	800	HFS 3137-S	900 2PT	1200	1600	1700	2000	T89x62x16
11	825	HFS 3137-S	900 2PT	1200	1650	1700	2050	T89x62x16
12	900	HFS 3137-S	1000 2PT	1300	1650	1800	2050	T89x62x16
13	975	HFS 3137-S	1000 2PT	1300	1750	1800	2150	T89x62x16
13	1000	HFS 3137-S	1000 2PT	1300	1800	1800	2200	T89x62x16
14	1050	HFS 3137-S	1000 2PT	1300	1900	1800	2300	T114x89x16
15	1125	HFU 200-S	1000 2PT	1300	2000	1800	2400	T114x89x16
16	1200	HFU 200-S	1100 2PT	1350	2000	1850	2400	T114x89x16
16	1250	HFU 200-S	1100 2PT	1350	2100	1850	2500	T114x89x16
17	1275	HFU 200-S	1100 2PT	1350	2150	1850	2550	T114x89x16
18	1350	HFU 220-S	1100 2PT	1350	2250	1850	2650	T114x89x16
19	1425	HFU 220-S	1100 2PT	1350	2350	1850	2750	T114x89x16
20	1500	HFU 220-S	1100 2PT	1400	2400	1900	2800	T114x89x16
21	1600	HFU 220-S	1100 2PT	1400	2450	1900	2850	T114x89x16
24	1800	HFU 220-S	1100 2PT	1500	2500	2000	2900	T114x89x16

* For car down speed > 0.63m/sec progressive safety gear is required for the car sling

Layout arrangement: acting 1:1
Single entrance – guide rails at the side

Plan view



Layout arrangement: acting 1:1
 Single entrance – guide rails at rear

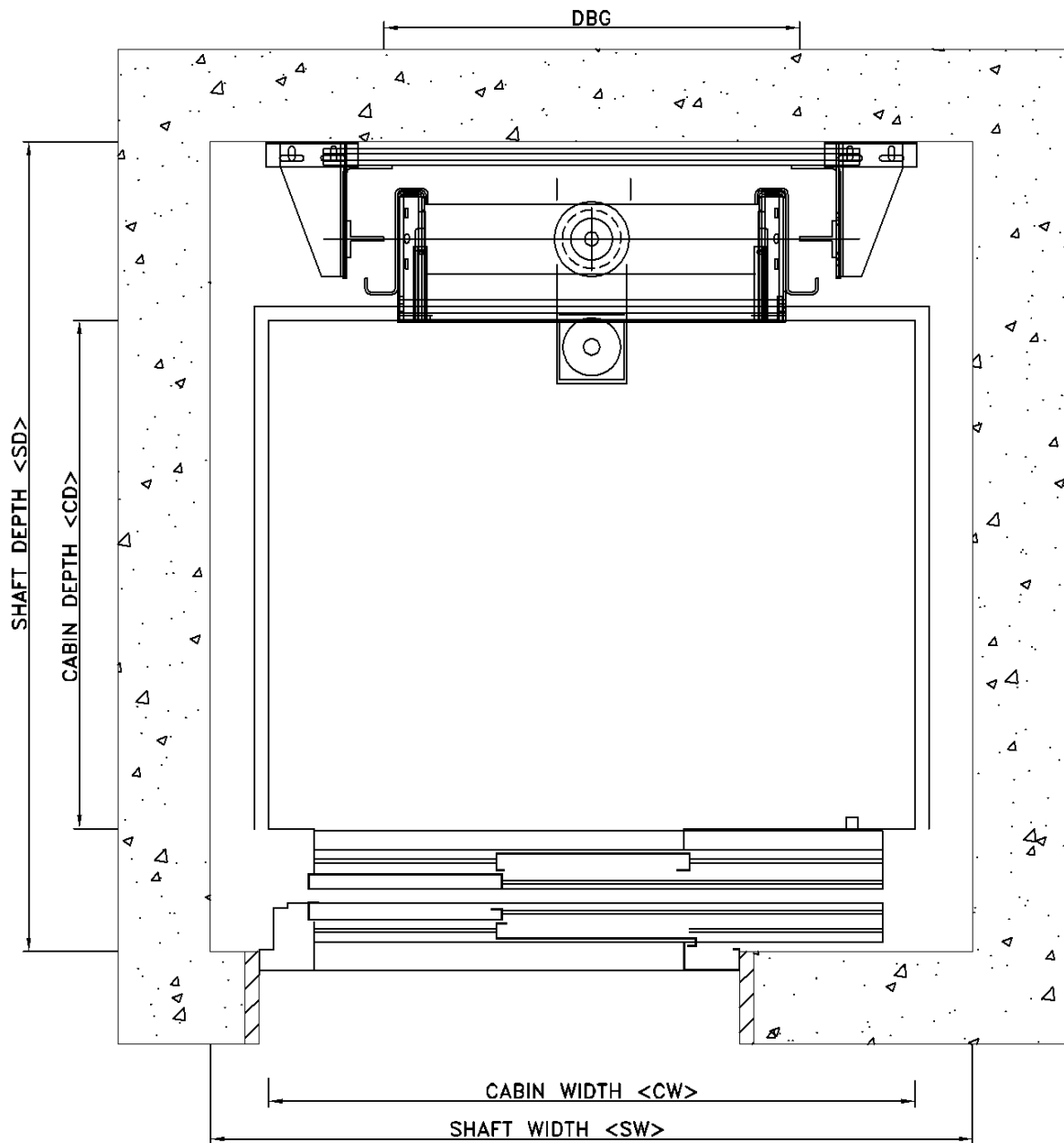
Technical specification

<i>No of Passengers</i>	<i>Capacity [kg*]</i>	<i>Car Sling Type</i>	<i>Door Type</i>	<i>Cabin Width [mm]</i>	<i>Cabin Depth [mm]</i>	<i>Shaft Width [mm]</i>	<i>Shaft Depth [mm]</i>	<i>Guide Rails</i>
3	225	HFS 2237-S	600 2PT	1000	700	1200	1400	T70x65x09
4	300	HFS 2237-S	700 2PT	1050	850	1300	1550	T70x65x09
5	375	HFS 2237-S	700 2PT	1100	1000	1300	1700	T70x65x09
5	400	HFS 2237-S	700 2PT	1150	1000	1350	1700	T70x65x09
6	450	HFS 2237-S	700 2PT	1150	1100	1350	1800	T70x65x09
7	525	HFS 2237-S	800 2PT	1300	1100	1500	1800	T82x68x09
8	600	HFS 2237-S	800 2PT	1400	1100	1600	1800	T82x68x09
8	630	HFS 2237-S	800 2PT	1400	1100	1600	1800	T82x68x09
9	675	HFS 2237-S	900 2PT	1550	1100	1750	1800	T82x68x09
10	750	HFS 3137-S	900 2PT	1550	1200	1750	1900	T89x62x16
11	800	HFS 3137-S	900 2PT	1600	1200	1800	1900	T89x62x16
11	825	HFS 3137-S	900 2PT	1650	1200	1850	1900	T89x62x16
12	900	HFS 3137-S	1000 2PT	1650	1300	1850	2000	T89x62x16
13	975	HFS 3137-S	1000 2PT	1750	1300	1950	2000	T89x62x16
13	1000	HFS 3137-S	1000 2PT	1800	1300	2000	2000	T89x62x16
14	1050	HFS 3137-S	1000 2PT	1900	1300	2100	2000	T114x89x16
15	1125	HFU 200-S	1000 2PT	2000	1300	2200	2000	T114x89x16
16	1200	HFU 200-S	1100 2PT	2000	1350	2200	2050	T114x89x16
16	1250	HFU 200-S	1100 2PT	2100	1350	2300	2050	T114x89x16
17	1275	HFU 200-S	1100 2PT	2150	1350	2350	2050	T114x89x16
18	1350	HFU 220-S	1100 2PT	2250	1350	2450	2050	T114x89x16
19	1425	HFU 220-S	1100 2PT	2350	1350	2550	2050	T114x89x16
20	1500	HFU 220-S	1100 2PT	2400	1400	2600	2100	T114x89x16
21	1600	HFU 220-S	1100 2PT	2450	1400	2650	2100	T114x89x16
24	1800	HFU 220-S	1100 2PT	2500	1500	2700	2200	T114x89x16

* For car down speed > 0.63m/sec progressive safety gear is required for the car sling

Layout arrangement: acting 1:1
Single entrance – guide rails at rear

Plan view



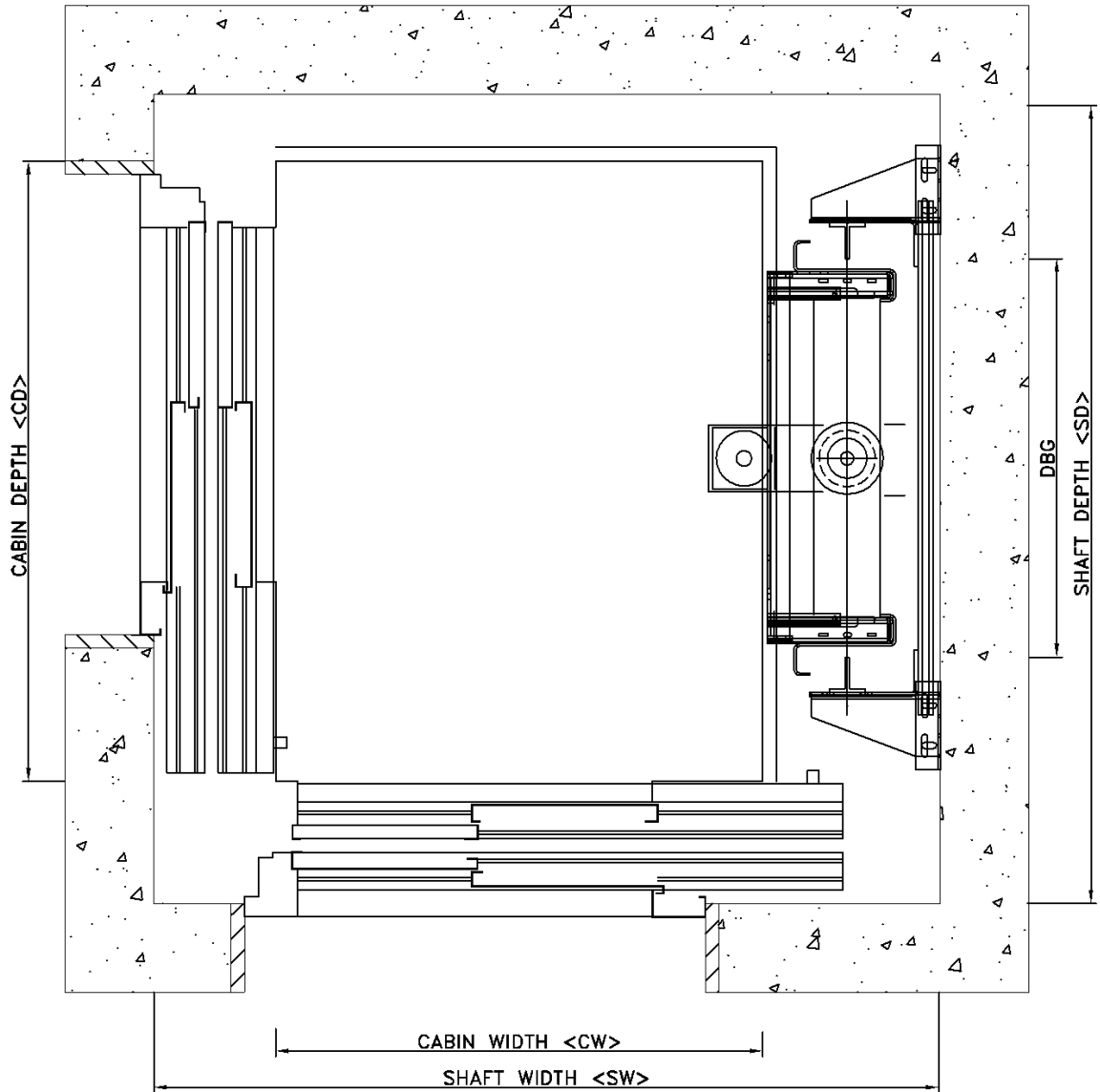
Layout arrangement: acting 1:1
 Adjacent entrances – guide rails at the side

Technical specification

No of Passengers	Capacity [kg*]	Car Sling Type	Door Type	Cabin Width [mm]	Cabin Depth [mm]	Shaft Width [mm]	Shaft Depth [mm]	Guide Rails
3	225	HFS 2237-S	600 2PT	700	1000	1400	1400	T70x65x09
4	300	HFS 2237-S	700 2PT	850	1050	1550	1450	T70x65x09
5	375	HFS 2237-S	700 2PT	1000	1100	1700	1500	T70x65x09
5	400	HFS 2237-S	700 2PT	1000	1150	1700	1550	T70x65x09
6	450	HFS 2237-S	700 2PT	1100	1150	1800	1550	T82x68x09
7	525	HFS 2237-S	800 2PT	1100	1300	1800	1700	T82x68x09
8	600	HFS 2237-S	800 2PT	1100	1400	1800	1800	T82x68x09
8	630	HFS 2237-S	800 2PT	1100	1400	1800	1800	T82x68x09
9	675	HFS 2237-S	900 2PT	1100	1550	1800	1950	T89x62x16
10	750	HFS 3137-S	900 2PT	1200	1550	1900	1950	T89x62x16
11	800	HFS 3137-S	900 2PT	1200	1600	1900	2000	T89x62x16
11	825	HFS 3137-S	900 2PT	1200	1650	1900	2050	T89x62x16
12	900	HFS 3137-S	1000 2PT	1300	1650	2000	2050	T89x62x16
13	975	HFS 3137-S	1000 2PT	1300	1750	2000	2150	T114x89x16
13	1000	HFS 3137-S	1000 2PT	1300	1800	2000	2200	T114x89x16
14	1050	HFS 3137-S	1000 2PT	1300	1900	2000	2300	T114x89x16
15	1125	HFU 200-S	1000 2PT	1300	2000	2000	2400	T114x89x16
16	1200	HFU 200-S	1100 2PT	1350	2000	2050	2400	T114x89x16
16	1250	HFU 200-S	1100 2PT	1350	2100	2050	2500	T114x89x16
17	1275	HFU 200-S	1100 2PT	1350	2150	2050	2550	T114x89x16
18	1350	HFU 220-S	1100 2PT	1350	2250	2050	2650	T114x89x16
19	1425	HFU 220-S	1100 2PT	1350	2350	2050	2750	T114x89x16
20	1500	HFU 220-S	1100 2PT	1400	2400	2100	2800	T114x89x16
21	1600	HFU 220-S	1100 2PT	1400	2450	2100	2850	T114x89x16
24	1800	HFU 220-S	1100 2PT	1500	2500	2200	2900	T114x89x16

* For car down speed > 0.63m/sec progressive safety gear is required for the car sling

Layout arrangement: acting 1:1
Adjacent entrances – guide rails at the side
Plan view



Layout arrangement: acting 1:1
 Through car – guide rails at the side

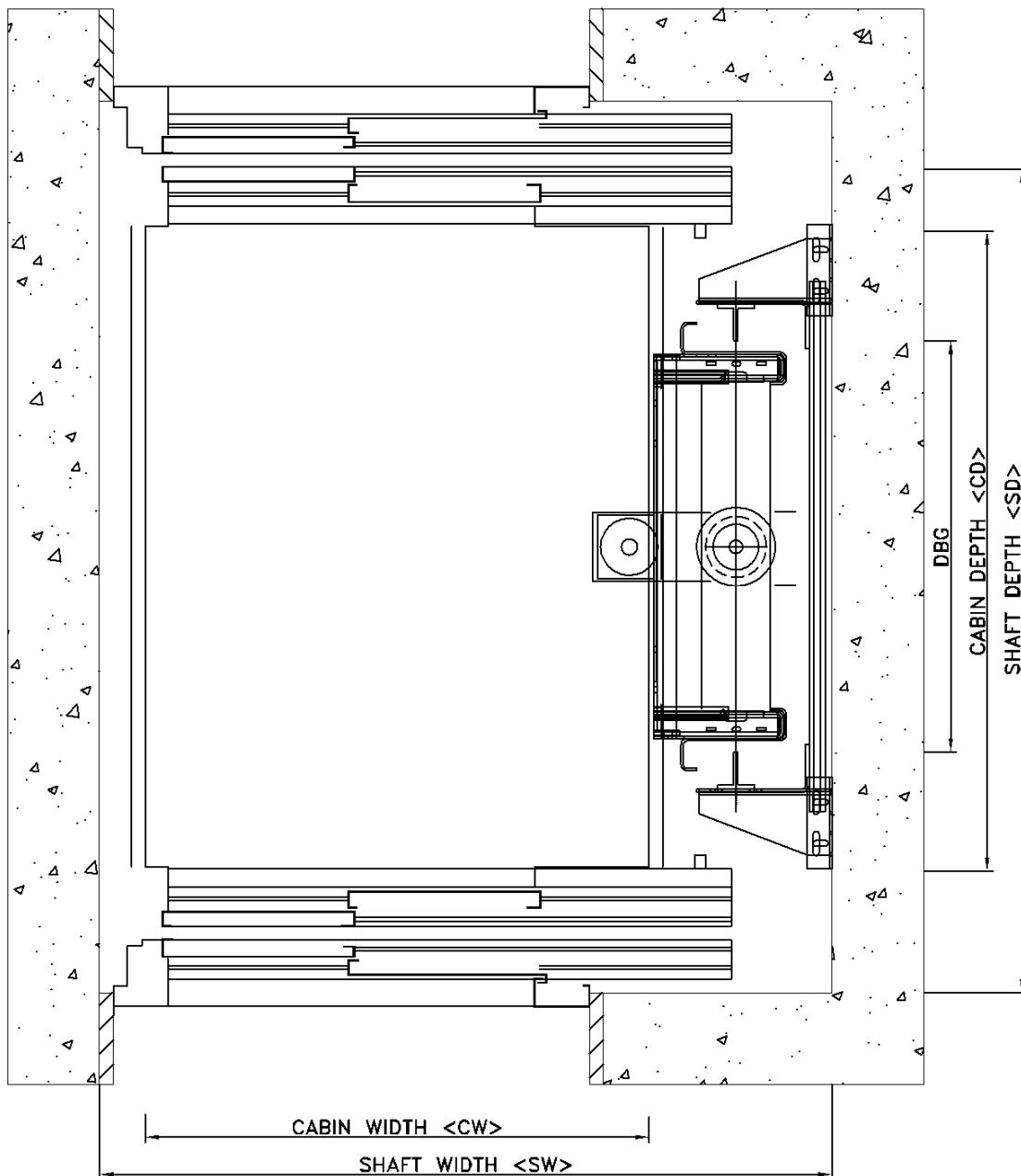
Technical specification

No of Passengers	Capacity [kg*]	Car Sling Type	Door Type	Cabin Width [mm]	Cabin Depth [mm]	Shaft Width [mm]	Shaft Depth [mm]	Guide Rails
3	225	HFS 2237-S	600 2PT	700	1000	1200	1600	T70x65x09
4	300	HFS 2237-S	700 2PT	850	1050	1350	1650	T70x65x09
5	375	HFS 2237-S	700 2PT	1000	1100	1500	1700	T70x65x09
5	400	HFS 2237-S	700 2PT	1000	1150	1500	1750	T70x65x09
6	450	HFS 2237-S	700 2PT	1100	1150	1600	1750	T70x65x09
7	525	HFS 2237-S	800 2PT	1100	1300	1600	1900	T82x68x09
8	600	HFS 2237-S	800 2PT	1100	1400	1600	2000	T82x68x09
8	630	HFS 2237-S	800 2PT	1100	1400	1600	2000	T82x68x09
9	675	HFS 2237-S	900 2PT	1100	1550	1600	2150	T82x68x09
10	750	HFS 3137-S	900 2PT	1200	1550	1700	2150	T89x62x16
11	800	HFS 3137-S	900 2PT	1200	1600	1700	2200	T89x62x16
11	825	HFS 3137-S	900 2PT	1200	1650	1700	2250	T89x62x16
12	900	HFS 3137-S	1000 2PT	1300	1650	1800	2250	T89x62x16
13	975	HFS 3137-S	1000 2PT	1300	1750	1800	2350	T89x62x16
13	1000	HFS 3137-S	1000 2PT	1300	1800	1800	2400	T89x62x16
14	1050	HFS 3137-S	1000 2PT	1300	1900	1800	2500	T114x89x16
15	1125	HFU 200-S	1000 2PT	1300	2000	1800	2600	T114x89x16
16	1200	HFU 200-S	1100 2PT	1350	2000	1850	2600	T114x89x16
16	1250	HFU 200-S	1100 2PT	1350	2100	1850	2700	T114x89x16
17	1275	HFU 200-S	1100 2PT	1350	2150	1850	2750	T114x89x16
18	1350	HFU 220-S	1100 2PT	1350	2250	1850	2850	T114x89x16
19	1425	HFU 220-S	1100 2PT	1350	2350	1850	2950	T114x89x16
20	1500	HFU 220-S	1100 2PT	1400	2400	1900	3000	T114x89x16
21	1600	HFU 220-S	1100 2PT	1400	2450	1900	3050	T114x89x16
24	1800	HFU 220-S	1100 2PT	1500	2500	2000	3100	T114x89x16

* For car down speed > 0.63m/sec progressive safety gear is required for the car sling

Layout arrangement: acting 1:1
Through car – guide rails at the side

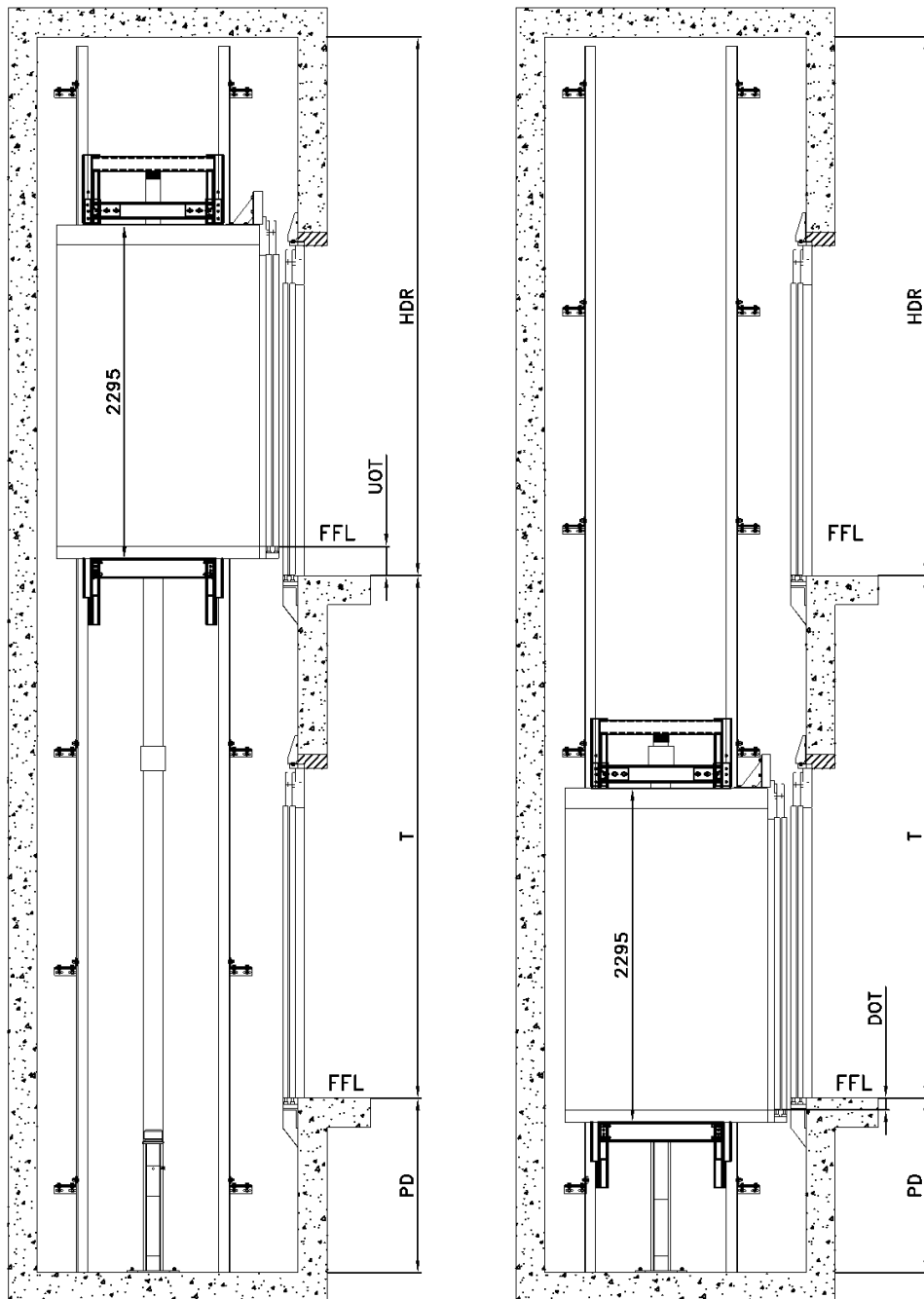
Plan view



Layout arrangement: acting 1:1

General section view

Section view

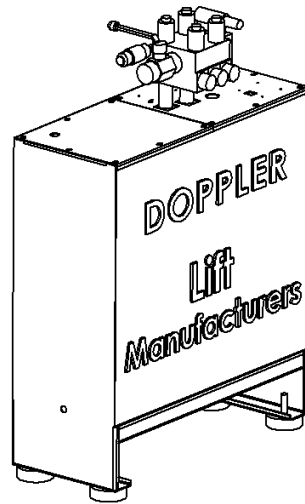


HDR	HEADROOM	3350 mm (min)
UOT	UP OVERTRAVEL	120 mm(min)
T	TRAVEL	3200 mm (max)
PD	PIT DEPTH	1200 mm(min)
DOT	DOWN OVERTRAVEL	80 mm (min)

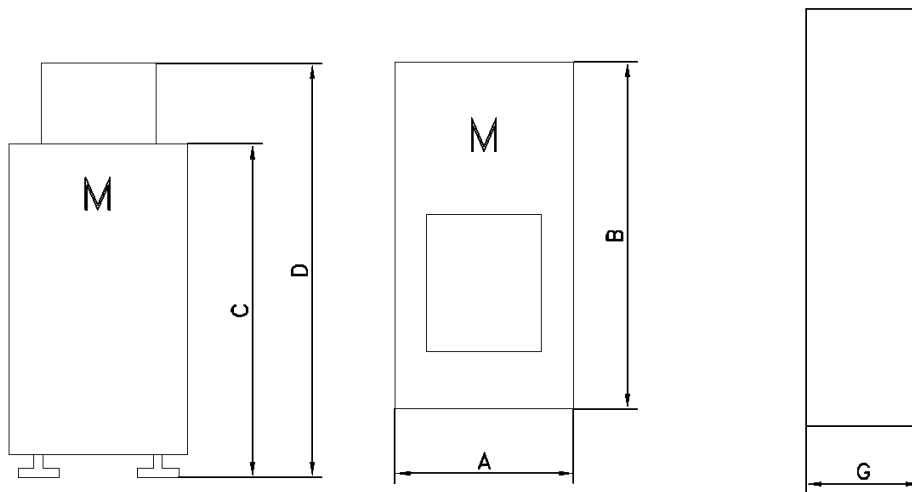
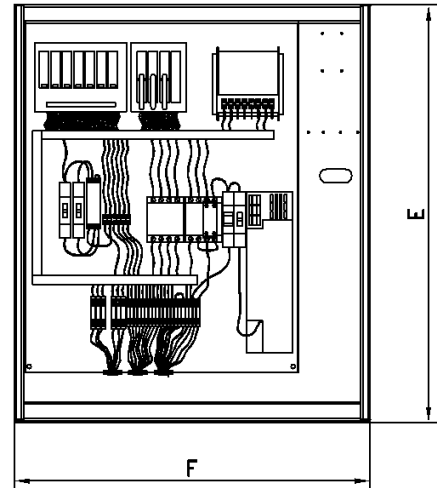
Layout arrangement:

Controller, control valves block and oil tank

OIL TANK



CONTROLER



MEASURES		TYPE				
		D108	D144	D262	D348	D488
OIL TANK	TOTAL OIL QUANTITY	108 lit	144 lit	262 lit	348 lit	300 lit
	RATED OIL QUANTITY	78 lit	104 lit	197 lit	283 lit	398 lit
	A	390 mm	390 mm	480 mm	480 mm	585 mm
	B	835 mm	1080 mm	1080 mm	1000 mm	1325 mm
	C	725 mm	725 mm	890 mm	1100 mm	1025 mm
CONTROLER	D	900 mm	900 mm	1100 mm	1280 mm	1240 mm
	E	800 mm	CONTROLER with pre-wired		E	1000 mm
	F	700 mm			F	700 mm
	G	250 mm			G	250 mm

Certification

ΔΗΛΩΣΗ ΚΑΤΑΣΚΕΥΑΣΤΗ
MANUFACTURER'S DECLARATION

Με το παρόν δηλώνεται ότι η εταιρεία:

This is to declare that the company:

DOPPLER S.A.
ΒΙΟ.ΠΕ. Πολυκάστρου
Πολύκαστρο, 61200
DOPPLER S.A.
Industrial Park of Polikastro
GR 61200, Polikastro Greece

έχει εγκαταστήσει και εφαρμόζει ένα πλήρες Σύστημα Διασφάλισης Ποιότητας σύμφωνα με την οδηγία για τους ανελκυστήρες (95/16/ΕΚ, Παράρτημα XIII, Ενότητα Η)

και το πρότυπο EN ISO 9001:1994, για το

has established and operates a Quality Assurance System pursuant to the Lift Directive (95/16/EC, Annex XIII, Module H) and the EN ISO 9001:2000, for the

Σχεδιασμό, Κατασκευή, Συναρμολόγηση, Μελέτες εγκατάστασης, Μέθοδοι για τον Τελικό Έλεγχο των Ανελκυστήρων

Design, Manufacture, Assembly, Studies of Installation, Methods of final inspection and Testing of lifts.

Το σύστημα αυτό εξασφαλίζει ότι ο ανελκυστήρας, Νο _____ σχεδιάστηκε σύμφωνα με ένα ανελκυστήρα που ικανοποιεί όλες τις απαιτήσεις της οδηγίας των ανελκυστήρων και ο εγκαταστάτης μπορεί να τοποθετήσει τη σήμανση CE στον ανελκυστήρα ακολουθώντας μία από τις διαδικασίες που αναφέρονται στο άρθρο 8.2iii της οδηγίας.

This system ensures that the lift, Nr _____ was designed in accordance with a lift that satisfies all the requirements of the Lift Directive, and the installer may affix a CE marking on the Lift following the procedure drawn up to article 8.2.iii of the Directive.

DOPPLER S.A.
Βιομηχανία Ανελκυστήρων
DOPPLER S.A.
Lift Manufacturers



Σταύρος Σταυρόπουλος
Πρόεδρος & Διευθύνων Σύμβουλος
Stavros Stavropoulos
President & Managing Director