

# RANGE OF APPLICATION

## TRACTION LIFT MR HIGH SPEED

version 1.1 / 26-04-2012

**Factory – Head Office**

Polykastro Industrial Park  
61200 Polykastro, Greece  
Tel.: +30 23430 20140, 20150  
Fax: +30 23430 23701

**Athens Office-Showroom**

12, Lassani str., 12132  
Peristeri, Athens, Greece  
Tel.: +30 210 3416210, 210 5789881  
Fax: +30 210 3416474

**Athens Warehouse**

Odyssea Eliti 98, Ano Liosia,  
13342 Attiki, Athens, Greece  
Tel.: +30 210 5595163,  
Fax: +30 210 5596651

web: [www.doppler.gr](http://www.doppler.gr)  
Email: [info@doppler.gr](mailto:info@doppler.gr)



# TRACTION *Machine Room*

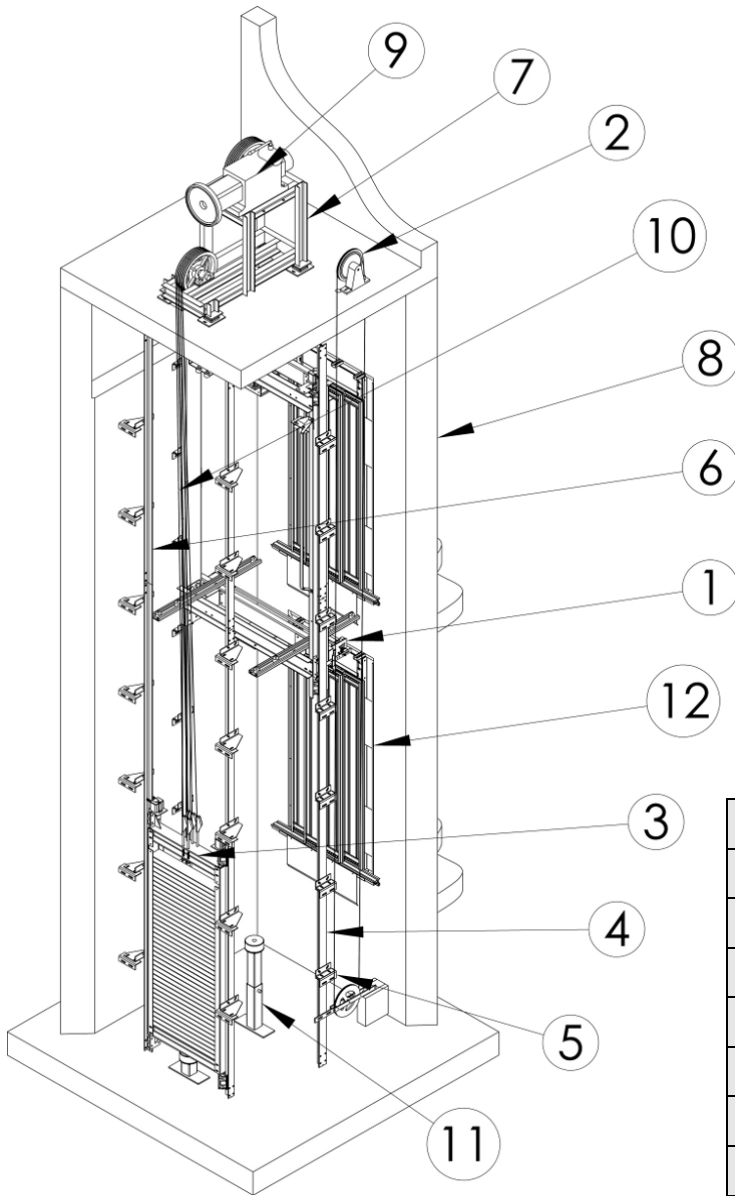
## *High Speed*

*Range of Application*

## Contents

<b>3D LAYOUT</b> .....	<b>3</b>
<b>TECHNICAL SPECIFICATION</b> .....	<b>4</b>
<b>LAYOUT ARRANGEMENT:</b> .....	<b>5</b>
SINGLE ENTRANCE – COUNTERWEIGHT AT THE BACK .....	5
<i>Plan view</i> .....	5
SINGLE ENTRANCE – COUNTERWEIGHT AT THE SIDE .....	6
<i>Plan view</i> .....	6
GENERAL SECTION VIEW .....	7
<i>Section view</i> .....	7
<b>CERTIFICATION</b> .....	<b>8</b>
MANUFACTURER’S DECLARATION.....	8

3D layout



1.	CAR SLING
2.	SPEED GOVERNOR
3.	COUNTERWEIGHT FRAME
4.	CAR GUIDE RAILS
5.	GUIDE RAIL BRACKETS
6.	COUNTERWEIGHT GUIDE RAILS
7.	MACHINE SUPPORT
8.	SHAFT WALL
9.	MACHINE
10.	ROPES
11.	BUFFER BASE
12.	LANDING DOORS

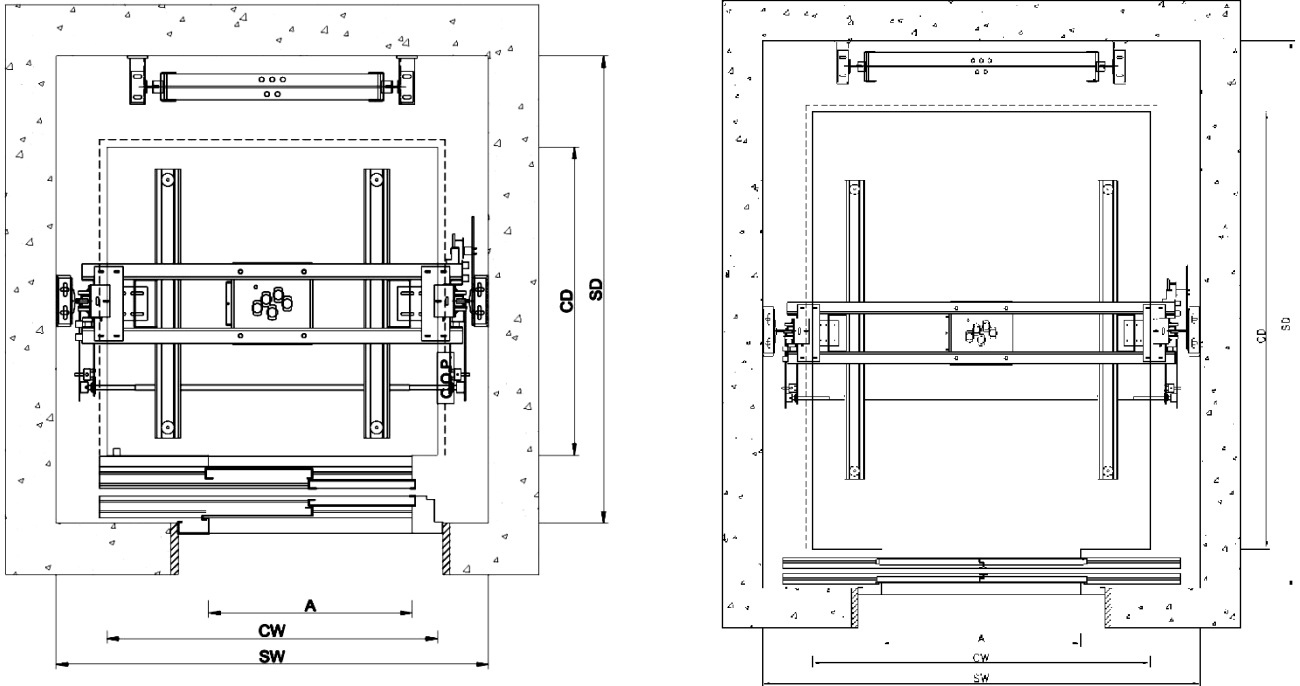
## Technical specification

Type:		Traction Machine Room High Speed						
<b>Rated Load:</b>		<b>300 Kg</b>	<b>450 Kg</b>	<b>630 kg</b>	<b>750 kg</b>	<b>1000 kg</b>	<b>1200 kg</b>	<b>1600 Kg</b>
<b>No of Persons:</b>		4	6	8	10	13	16	21
<b>Acting:</b>		1:1	1:1	1:1	1:1	1:1	1:1	2:1
<b>Max travel:</b>		100000 mm	100000 mm	100000 mm	100000 mm	100000 mm	100000 mm	100000 mm
<b>Supported load (P + Q)max</b>		1050 Kg	1270 Kg	1540 Kg	1760 Kg	2230 Kg	2510 Kg	3170 Kg
<b>Min Headroom</b>	<b>V ≤ 2.0 m/s</b>	3800 mm						
	<b>2.0 &lt; V ≤ 2.5 m/s</b>	4050 mm						
<b>Min Pit Depth:</b>	<b>V ≤ 2.0 m/s</b>	1400 mm	1400 mm	1450 mm	1450 mm	1500 mm	1500 mm	1500 mm
	<b>2.0 &lt; V ≤ 2.5 m/s</b>	1900 mm	1900 mm	1950 mm	1950 mm	2000 mm	2000 mm	2000 mm
<b>Car guide Rails:</b>		T89x62x16	T89x62x16	T89x62x16	T89x62x16	T89x62x16	T114x89x16	T114x89x16
<b>CW guide Rails:</b>		T70x65x9	T70x65x9	T70x65x9	T70x65x9	T70x65x9	T70x65x9	T70x65x9
<b>Buffer type:</b>	<b>V ≤ 2.0 m/s</b>	ENERGY DISSIPATION (HYDRAULIC) HAS HHT02						
	<b>2.0 &lt; V ≤ 2.5 m/s</b>	ENERGY DISSIPATION (HYDRAULIC) HYDRONIC OB 25						
<b>Rope type:</b>		DRAKO 300T						
<b>Machine type: (Alberto Sassi)</b>	<b>2.00 m/s VVVF</b>	MF 48	MF 48	MF 84	MF 84	MF 84	MF 94	MF 94
	<b>2.5 m/s VVVF</b>	MF 48	MF 48	MF 84	MF 84	MF 84	MB 94	MB 94
<b>Motor Power:</b>	<b>2.00 m/s VVVF</b>	7.0 kW	9.6 kW	13.2 kW	15.4 kW	20.2 kW	26.1 kW	27.9 kW
	<b>2.5 m/s VVVF</b>	7.7 kW	10.3 kW	13.6 kW	15.8 kW	20.6 kW	30 kW	37 kW
<b>Typical Pulley:</b>		Ø560 mm	Ø560 mm	Ø600 mm	Ø600 mm	Ø600 mm	Ø700 mm	Ø800 mm & Ø1000 mm
<b>Ropes:</b>		3xØ10 mm	3xØ10 mm	3xØ11 mm	3xØ11 mm	4xØ11 mm	4xØ12mm	5xØ11mm
<b>Compensation chain:</b>		1.09 kg/m	1.09 kg/m	1.09 kg/m	1.09 kg/m	1.49 kg/m	1.49 kg/m	2 X 1.49 kg/m

Layout arrangement:

Single entrance – Counterweight at the back

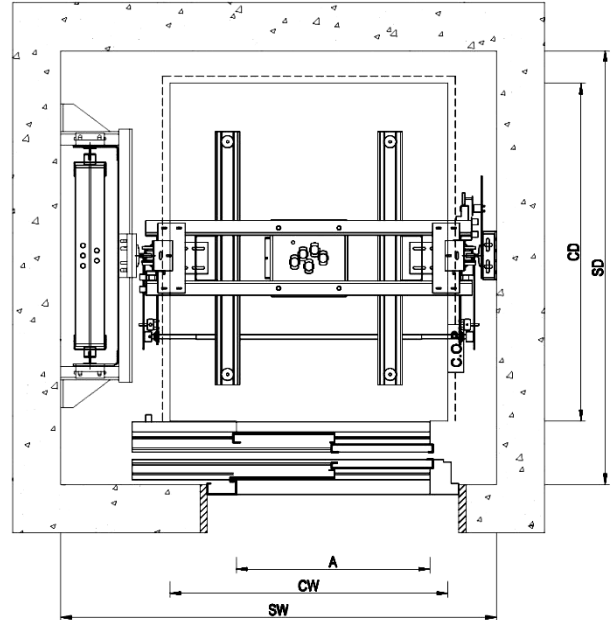
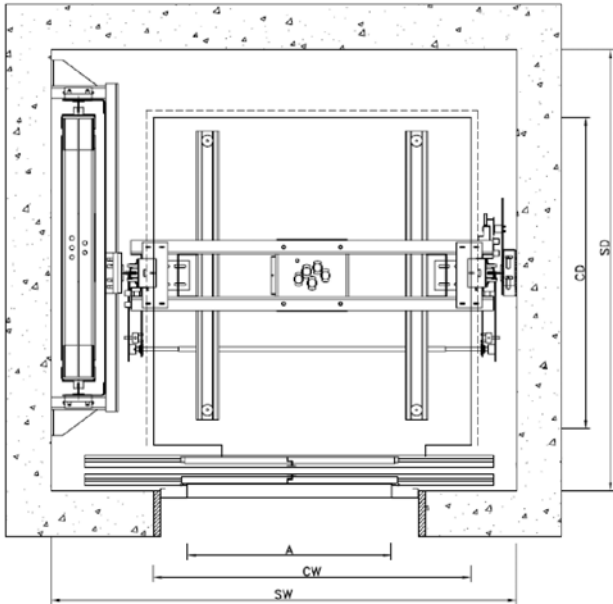
Plan view



### High Speed Passenger Traction Lift Counterweight at Back

Capacity		Automatic Doors 2 Panels Telescopic Opening					Automatic Doors 2 Panels Central Opening				
Persons	Kg	A	CW	CD	SW	SD	A	CW	CD	SW	SD
10	750	800	1200	1550	1700	2200	800	1200	1550	1800	2100
13	1000	900	1300	1800	1800	2450	900	1300	1800	2000	2350
21	1600	1100	1400	2400	2100	3050	1100	1400	2400	2400	2950
24	1800	1200	1500	2500	2200	3150	1100	1500	2500	2400	3050

Layout arrangement:  
Single entrance – Counterweight at the side  
Plan view



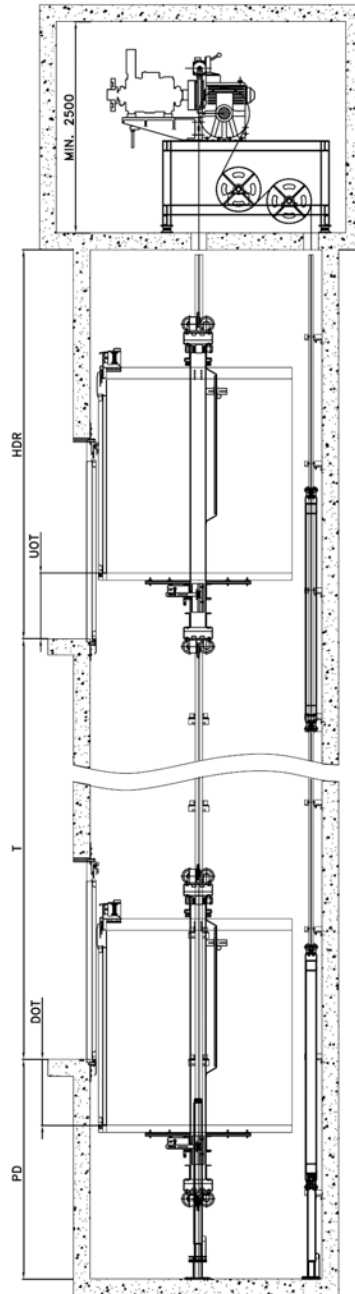
### High Speed Passenger Traction Lift Counterweight at Side

Capacity		Automatic Doors 2 Panels Telescopic Opening					Automatic Doors 2 Panels Central Opening				
Persons	Kg	A	CW	CD	SW	SD	A	CW	CD	SW	SD
10	750	800	1200	1550	1900	1950	800	1200	1550	1900	1900
13	1000	900	1300	1800	2000	2200	900	1300	1800	2000	2100
21	1600	1100	1400	2400	2150	2800	1100	1400	2400	2400	2700
24	2000	1200	1500	2500	2250	2900	1100	1500	2500	2400	2800

Layout arrangement:

General section view

Section view



	SPEED	2m/s	3m/s
<b>HDR</b>	HEADROOM	4000 mm (min)	4600 mm (min)
<b>UOT</b>	UP OVERTRAVEL	390 mm (min)	780 mm (min)
<b>T</b>	TRAVEL	100000 mm (max)	
<b>PD</b>	PIT DEPTH	1800 mm (min)	2600 mm (min)
<b>DOT</b>	DOWN OVERTRAVEL	390 mm (min)	780 mm (min)



Certification

**ΔΗΛΩΣΗ ΚΑΤΑΣΚΕΥΑΣΤΗ**  
**MANUFACTURER'S DECLARATION**

Με το παρόν δηλώνεται ότι η εταιρεία:

*This is to declare that the company:*

**DOPPLER S.A.**  
**ΒΙΟ.ΠΕ. Πολυκάστρου**  
**Πολύκαστρο, 61200**  
*DOPPLER S.A.*  
*Industrial Park of Polikastro*  
*GR 61200, Polikastro Greece*

έχει εγκαταστήσει και εφαρμόζει ένα πλήρες Σύστημα Διασφάλισης Ποιότητας σύμφωνα με την οδηγία για τους ανελκυστήρες (95/16/ΕΚ, Παράρτημα XIII, Ενότητα Η)

και το πρότυπο EN ISO 9001:2000, για το

*has established and operates a Quality Assurance System pursuant to the Lift Directive (95/16/EC, Annex XIII, Module H) and the EN ISO 9001:2000, for the*

**Σχεδιασμό, Κατασκευή, Συναρμολόγηση, Μελέτες εγκατάστασης, Μέθοδοι για τον Τελικό Έλεγχο των Ανελκυστήρων**

*Design, Manufacture, Assembly, Studies of Installation, Methods of final inspection and Testing of lifts.*

Το σύστημα αυτό εξασφαλίζει ότι ο ανελκυστήρας, Νο \_\_\_\_\_ σχεδιάστηκε σύμφωνα με ένα ανελκυστήρα που ικανοποιεί όλες τις απαιτήσεις της οδηγίας των ανελκυστήρων και ο εγκαταστάτης μπορεί να τοποθετήσει τη σήμανση CE στον ανελκυστήρα ακολουθώντας μία από τις διαδικασίες που αναφέρονται στο άρθρο 8.2iii της οδηγίας.

This system ensures that the lift, Nr \_\_\_\_\_ was designed in accordance with a lift that satisfies all the requirements of the Lift Directive, and the installer may affix a CE marking on the Lift following the procedure drawn up to article 8.2.iii of the Directive.

**DOPPLER S.A.**  
Βιομηχανία Ανελκυστήρων  
**DOPPLER S.A.**  
**Lift Manufacturers**



Σταύρος Σταυρόπουλος  
Πρόεδρος & Διευθύνων Σύμβουλος  
*Stavros Stavropoulos*  
President and CEO